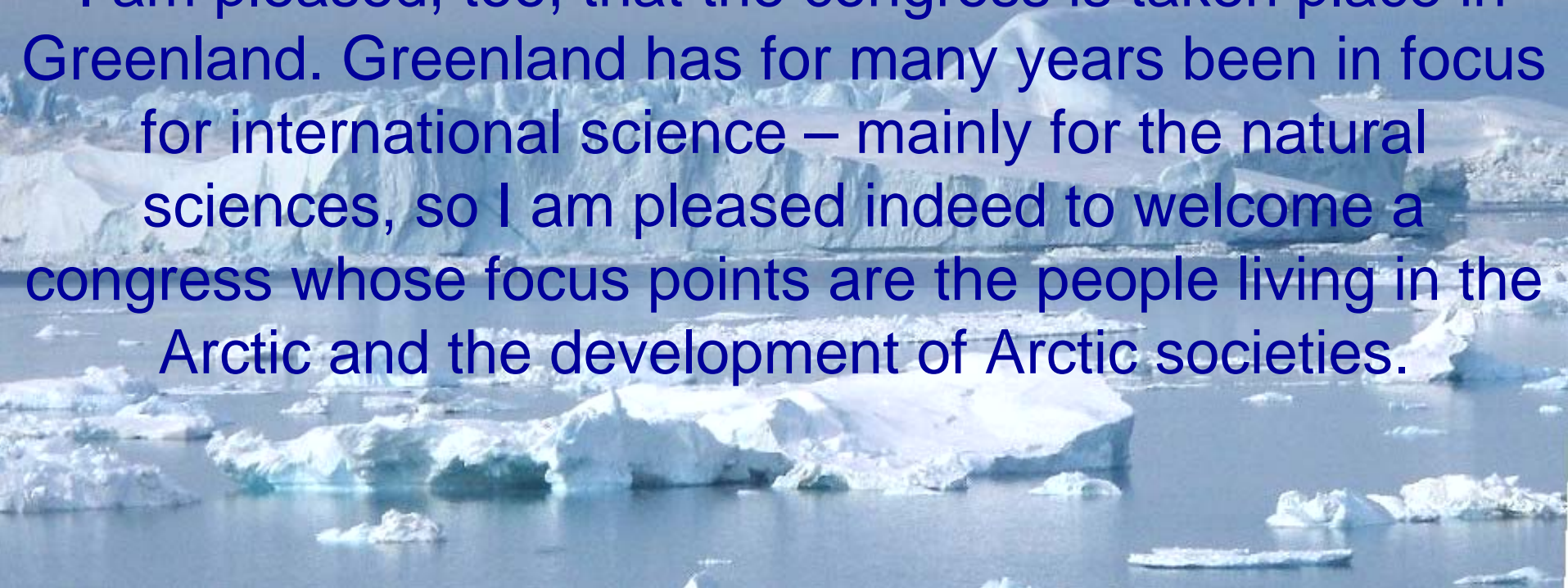


Dear participants


I am pleased to welcome the International Congress on Arctic Social Sciences and the participants to Greenland.

I am pleased, too, that the congress is taken place in Greenland. Greenland has for many years been in focus for international science – mainly for the natural sciences, so I am pleased indeed to welcome a congress whose focus points are the people living in the Arctic and the development of Arctic societies.



I know that the congress is part of the present International Polar Year, and I find it also for that reason very suitable that the congress is arranged in the Polar areas, in Greenland. Thank you to the organizers.







The International Polar Year has brought along an increasing interest in conducting research in Greenland. Unlike former polar years Greenlandic researchers are now engaged in IPY research projects in Greenland.

The Greenland Home Rule Government regards research as an important means to contribute to the development of the Greenland society, and consequently a number of Greenland research institutions have been established during the last 25 years of Home Rule.

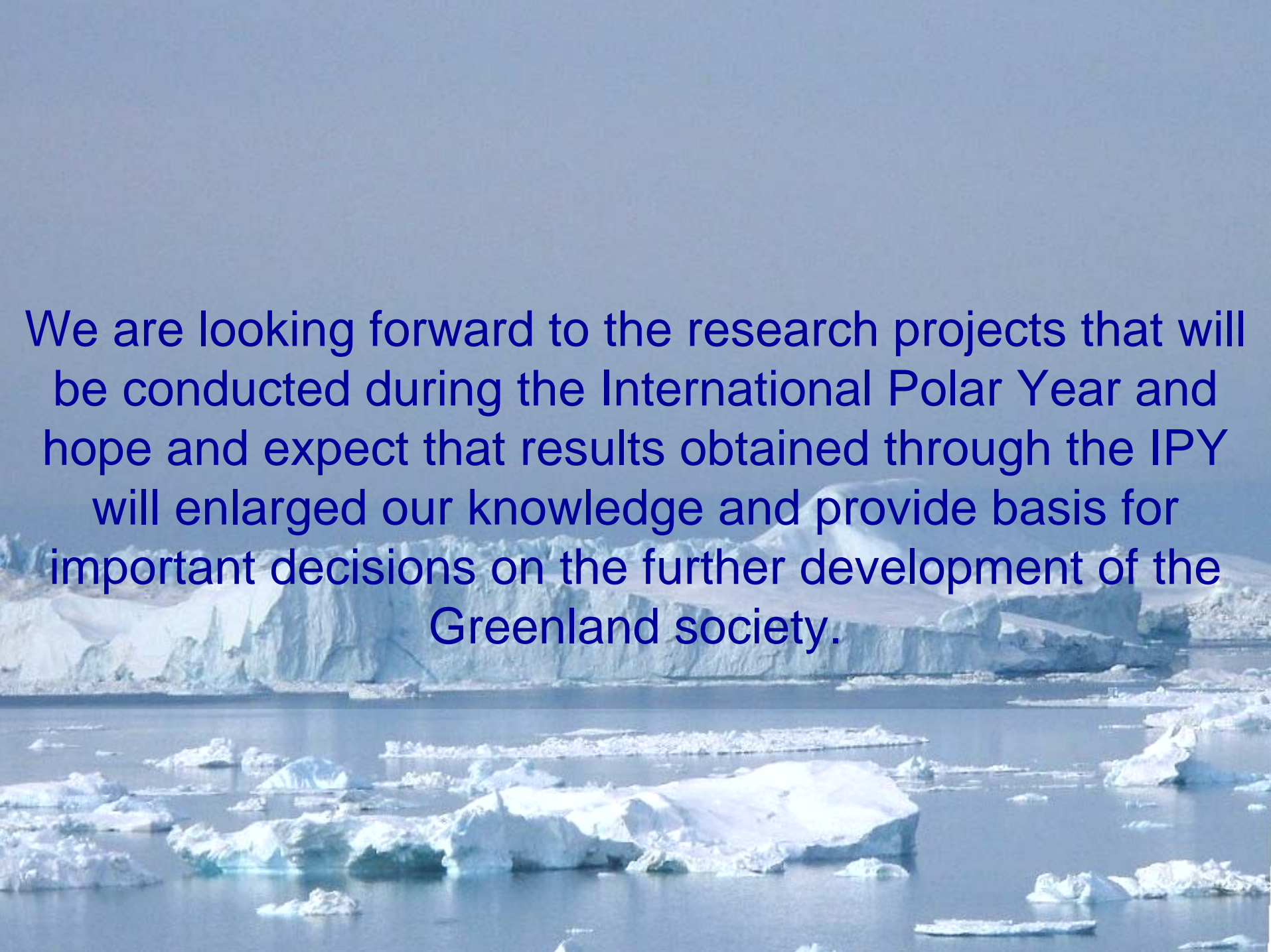
Our latest effort is the building of the university area Ilimmarfik, where parts of this conference will take place. We believe that Ilimmarfik will further Greenlandic research and will further international science cooperation.

A photograph of a large icebergs in the water, with a smaller iceberg in the foreground. The icebergs are white and blue, floating in a dark blue sea. The sky is a clear, pale blue. The text is overlaid on the image in a dark blue, sans-serif font.

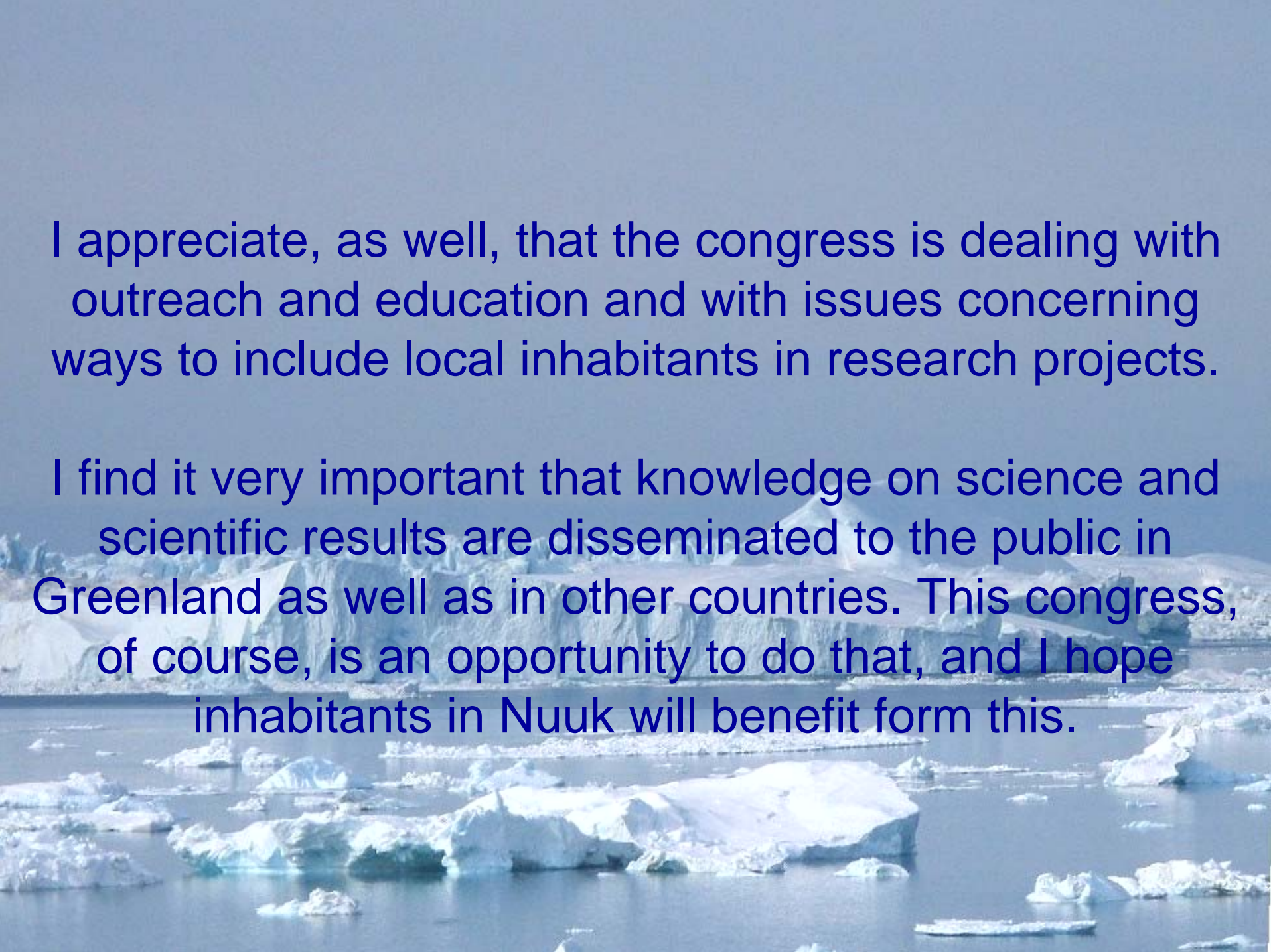


It is not possible, of course, for Greenland with its limited resources to cover all scientific areas. Therefore international cooperation between scientists, research groups and institutions is crucial for Greenland. And we want to promote that kind of international cooperation.

It is my hope that this congress will further international cooperation within the social sciences and the humanities for the benefit of the people living in the Arctic and for the development of the Arctic societies.

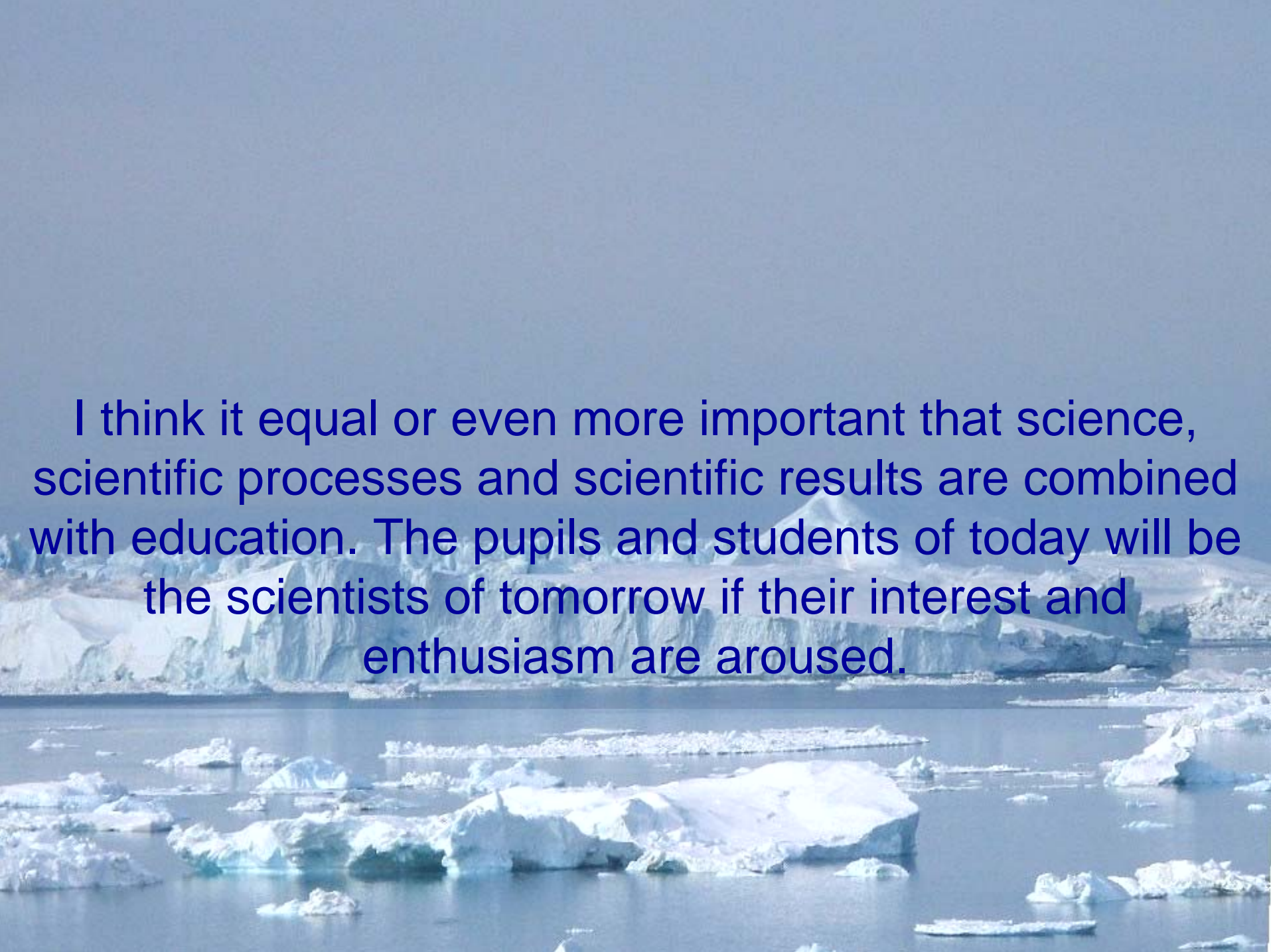


We are looking forward to the research projects that will be conducted during the International Polar Year and hope and expect that results obtained through the IPY will enlarged our knowledge and provide basis for important decisions on the further development of the Greenland society.



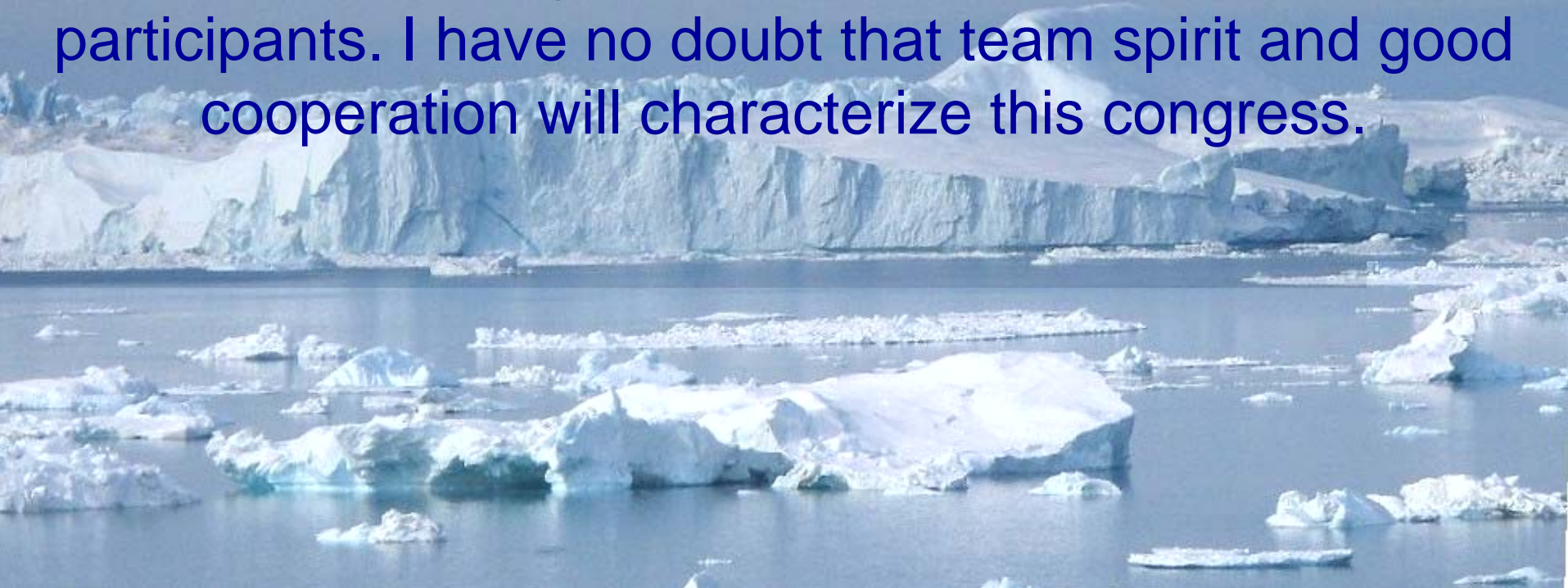
I appreciate, as well, that the congress is dealing with outreach and education and with issues concerning ways to include local inhabitants in research projects.

I find it very important that knowledge on science and scientific results are disseminated to the public in Greenland as well as in other countries. This congress, of course, is an opportunity to do that, and I hope inhabitants in Nuuk will benefit from this.

A photograph of a large iceberg with smaller icebergs floating in the water under a clear blue sky. The text is overlaid on the image.

I think it equal or even more important that science, scientific processes and scientific results are combined with education. The pupils and students of today will be the scientists of tomorrow if their interest and enthusiasm are aroused.

Any researcher knows that working in the field requires team spirit and good cooperation between all the participants. I have no doubt that team spirit and good cooperation will characterize this congress.



I wish you all a fruitful congress with exciting presentations and creative discussions.

Once again – welcome to Greenland and welcome to Nuuk.

Thank you.

